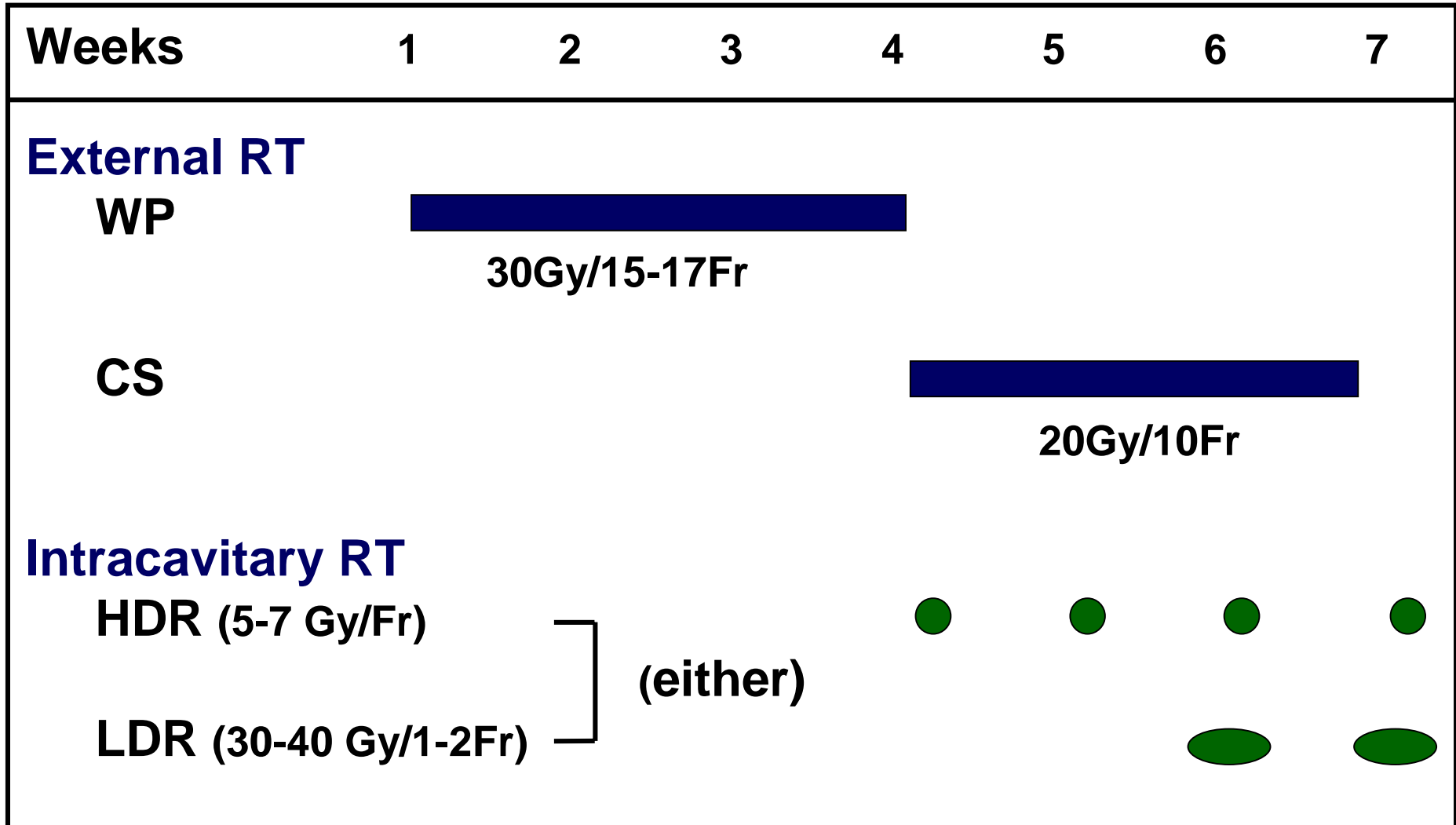


FNCA Project of Radiotherapy for Cervical Cancer

Protocol: Cervix-I

Stage IIIB Squamous Cell Carcinoma of the Cervix

Standardized Protocol



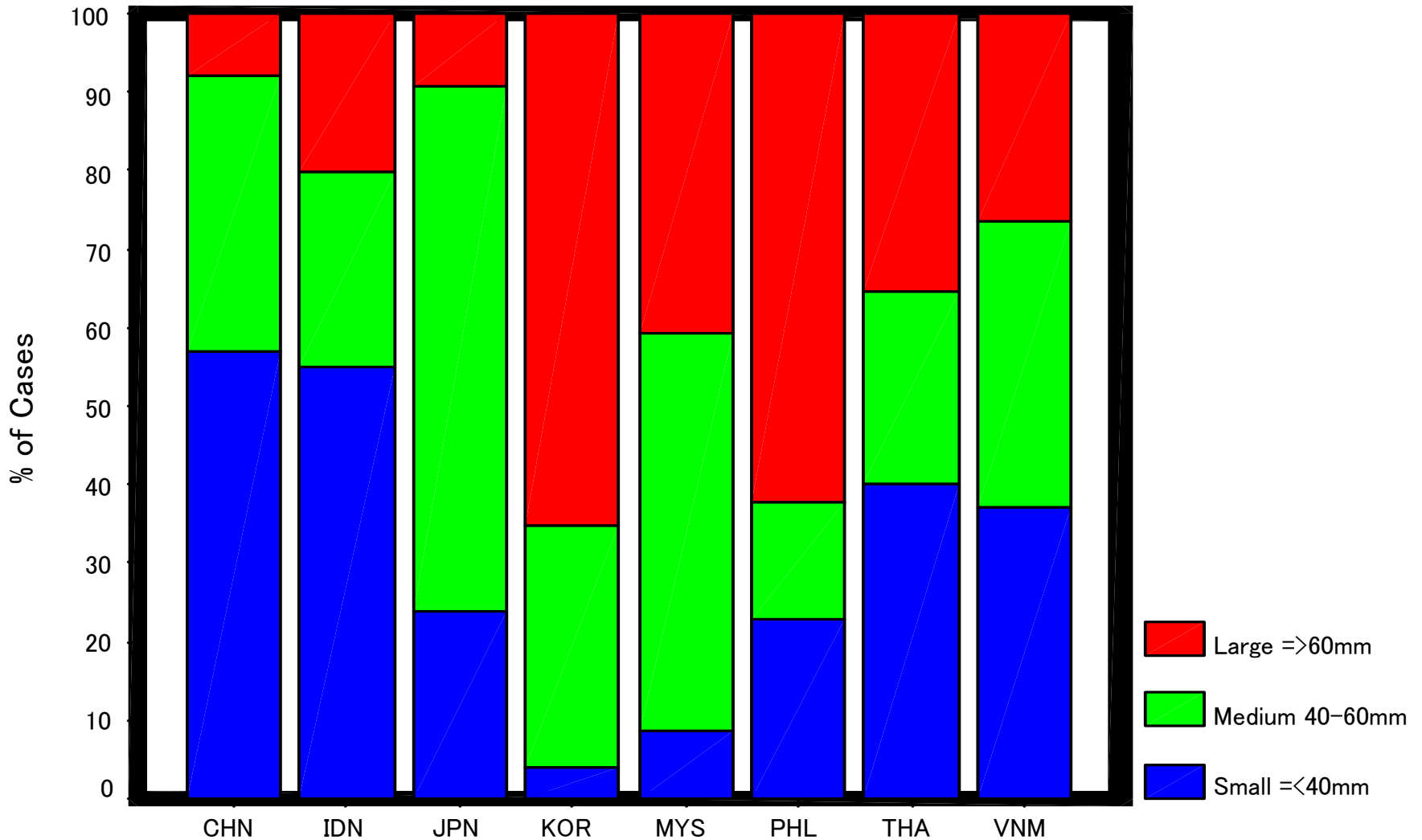
Summary of 210 Registered Cases

(Period of patient accrual: Jan. 1995 ~ Dec. 1998)

Country	No. of Pts
China	34
Indonesia	24
Japan	33
Korea	20
Malaysia	12
The Philippines	22
Thailand	37
Vietnam	28
Total	210

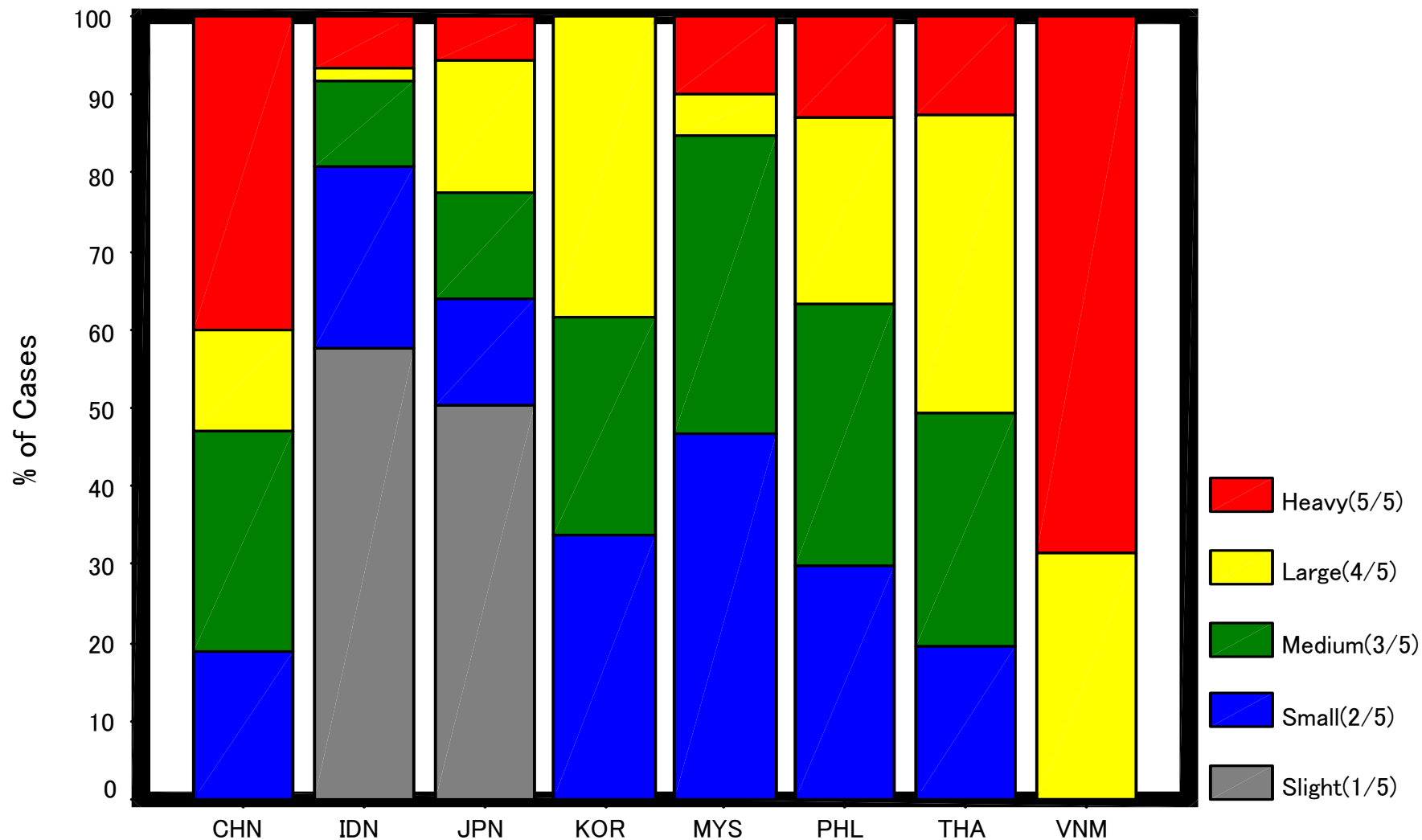
Cervical tumor size

Tumor Size at Portio



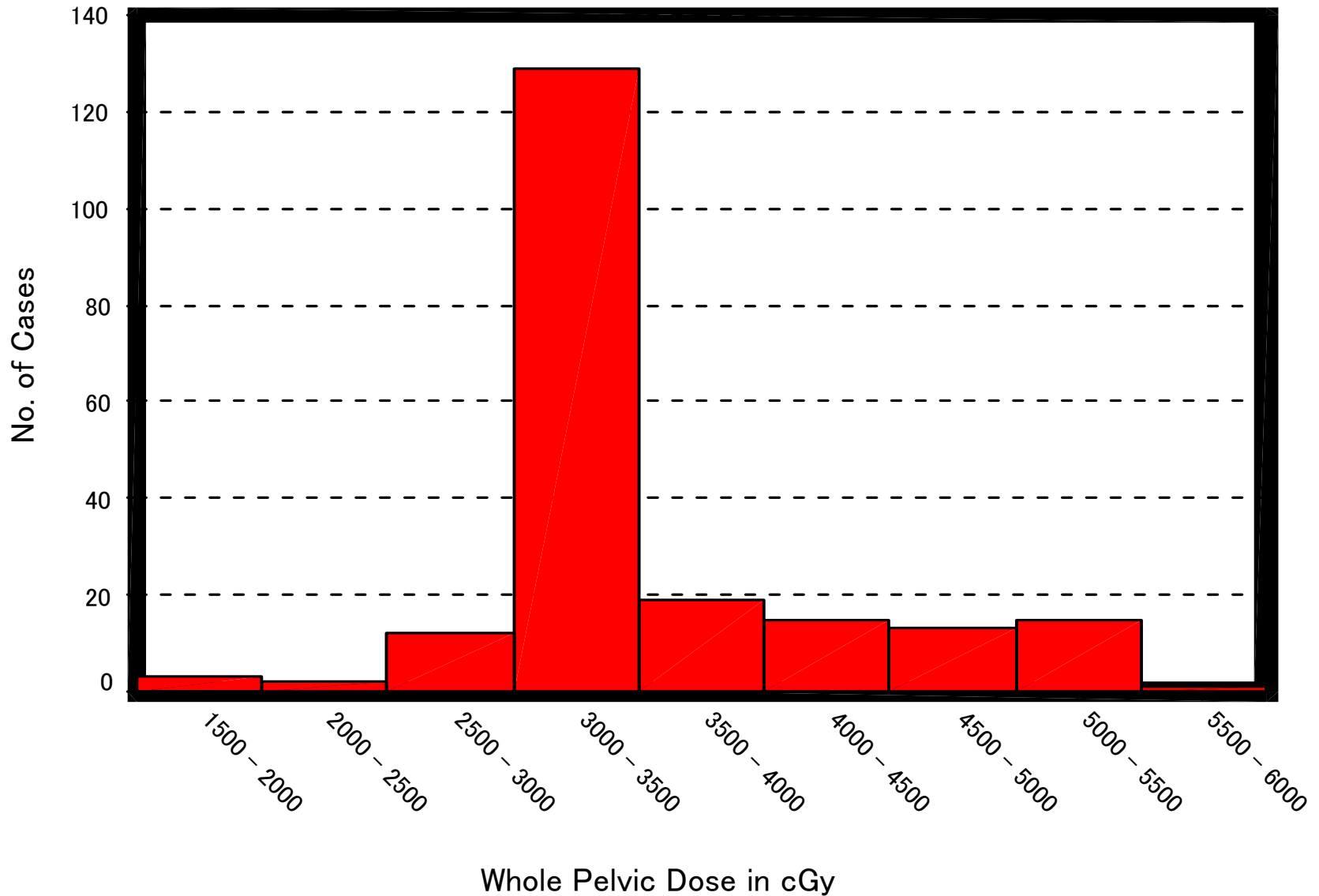
Degree of tumor infiltration into the parametrium

Tumor Volume at Parametrium



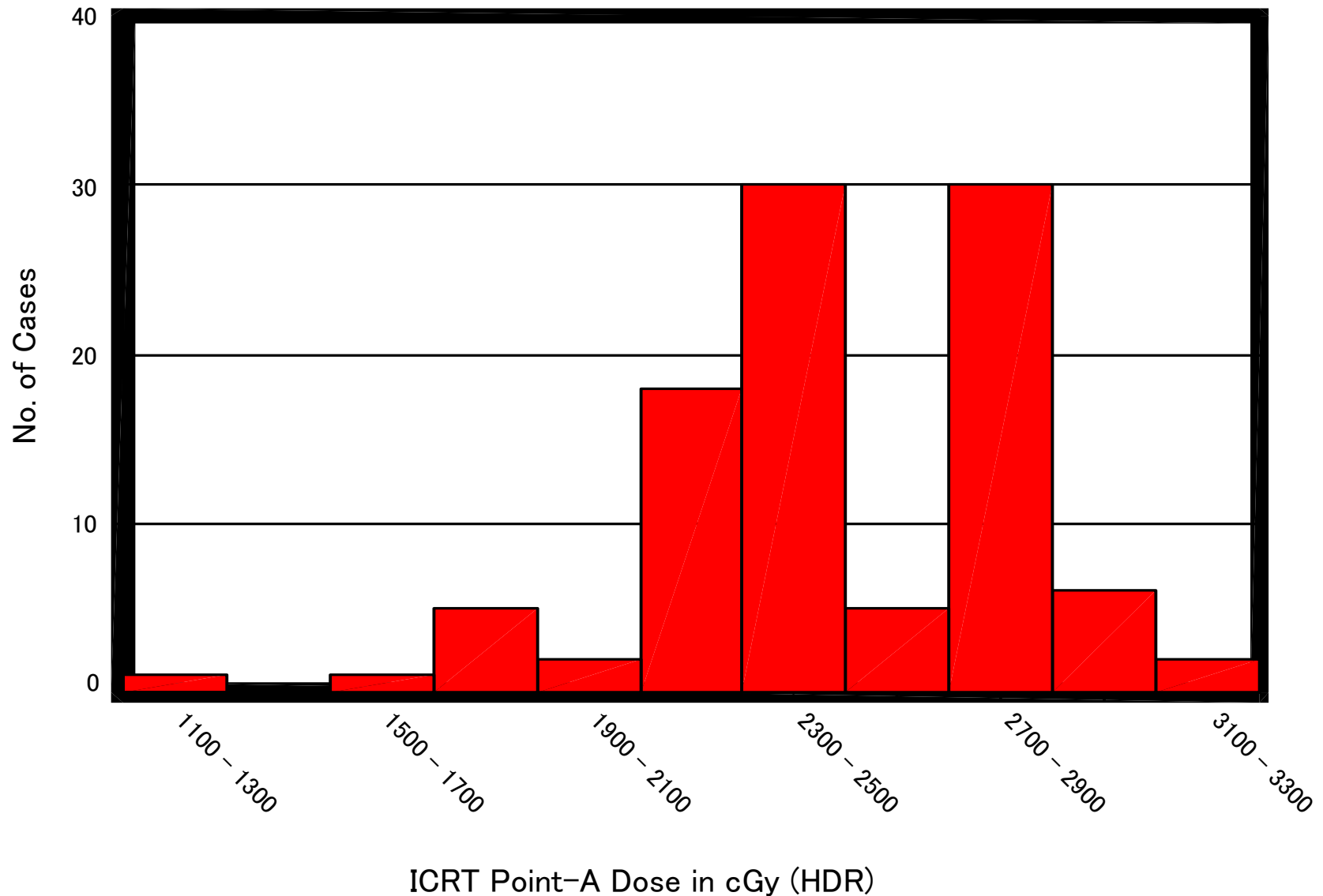
Dose of WP-EBRT

(N=210)

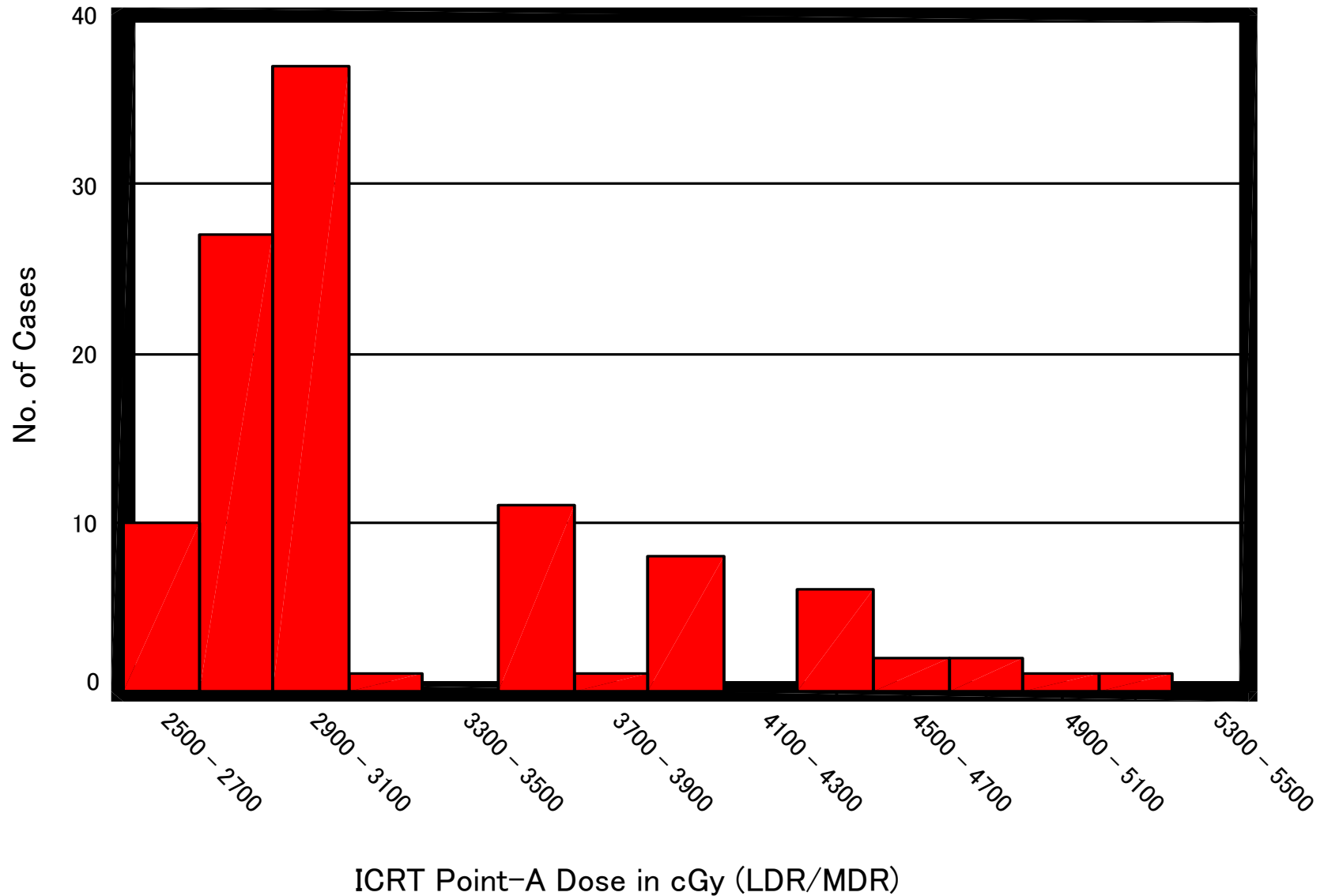


Point A Dose of HDR-ICBT

(N=100)



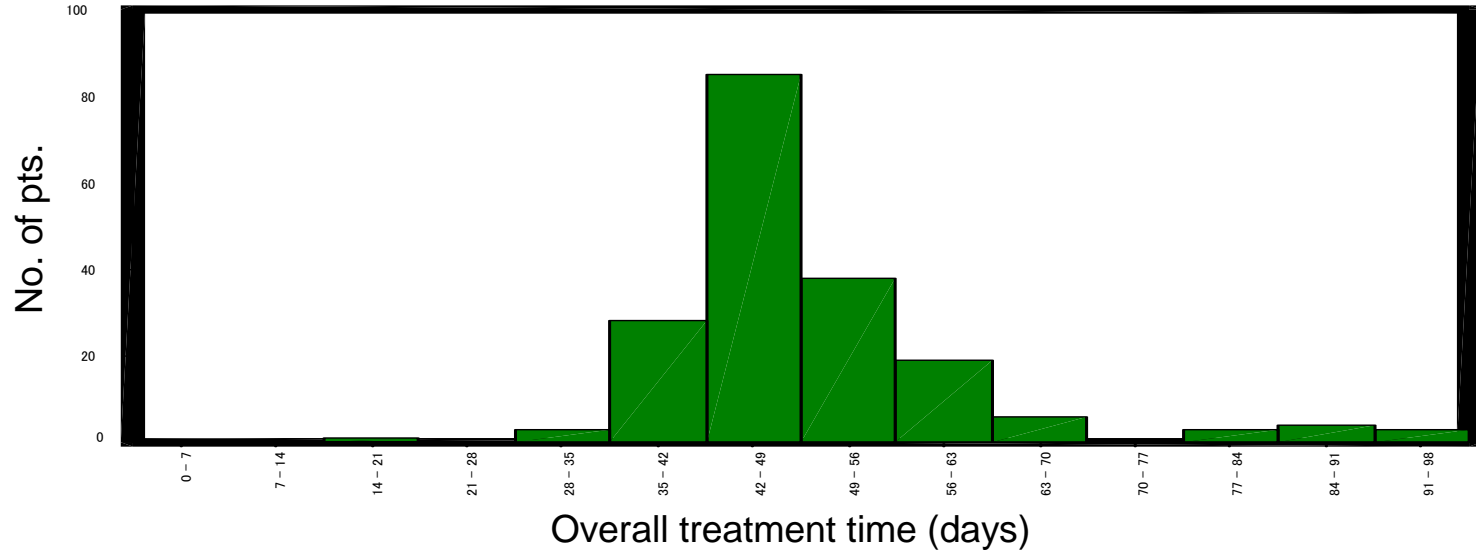
Point A Dose of MDR/LDR-ICBT (N=109)



Overall treatment time

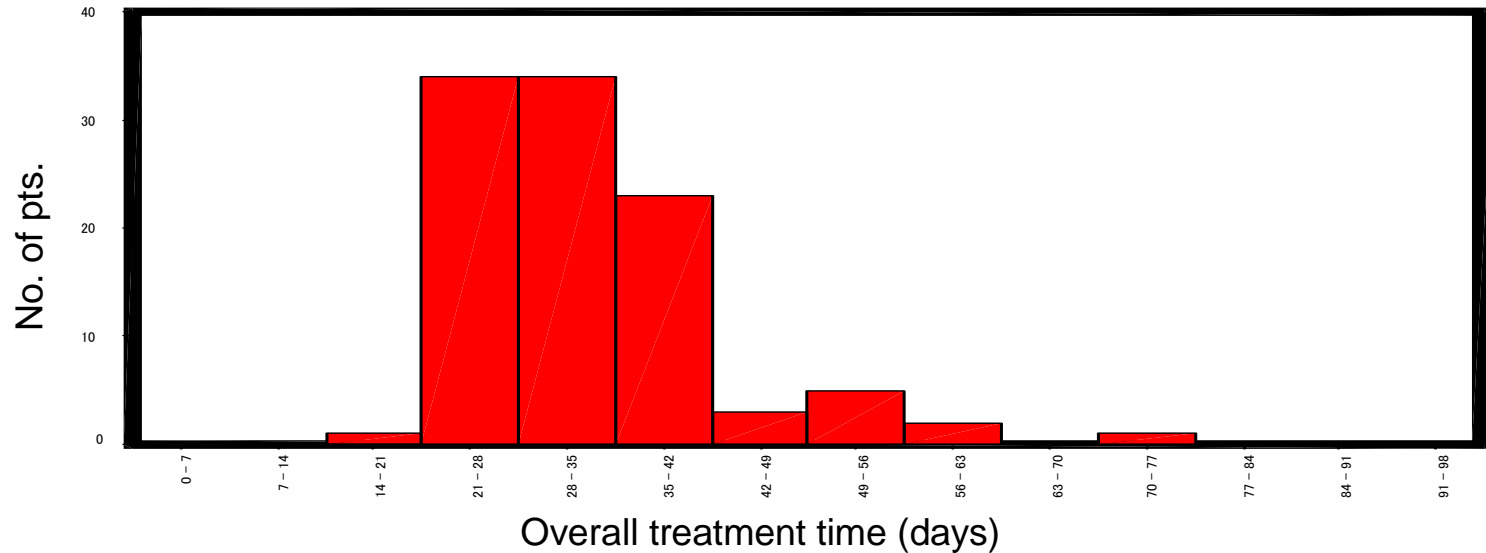
Cervix-I

N=190



Cervix-II

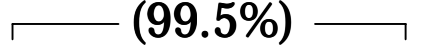
N=103



Acute Radiation Morbidity

RTOG Grade	0	1	2	3	4
Rectum/Sigmoid colon (%)	75	22.5	2	0	0.5
Urinary Bladder (%)	81.5	15	1.5	1	1
Small Intestine (%)	76	21	1.5	0.5	1

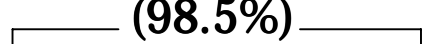
(99.5%)



(98%)



(98.5%)



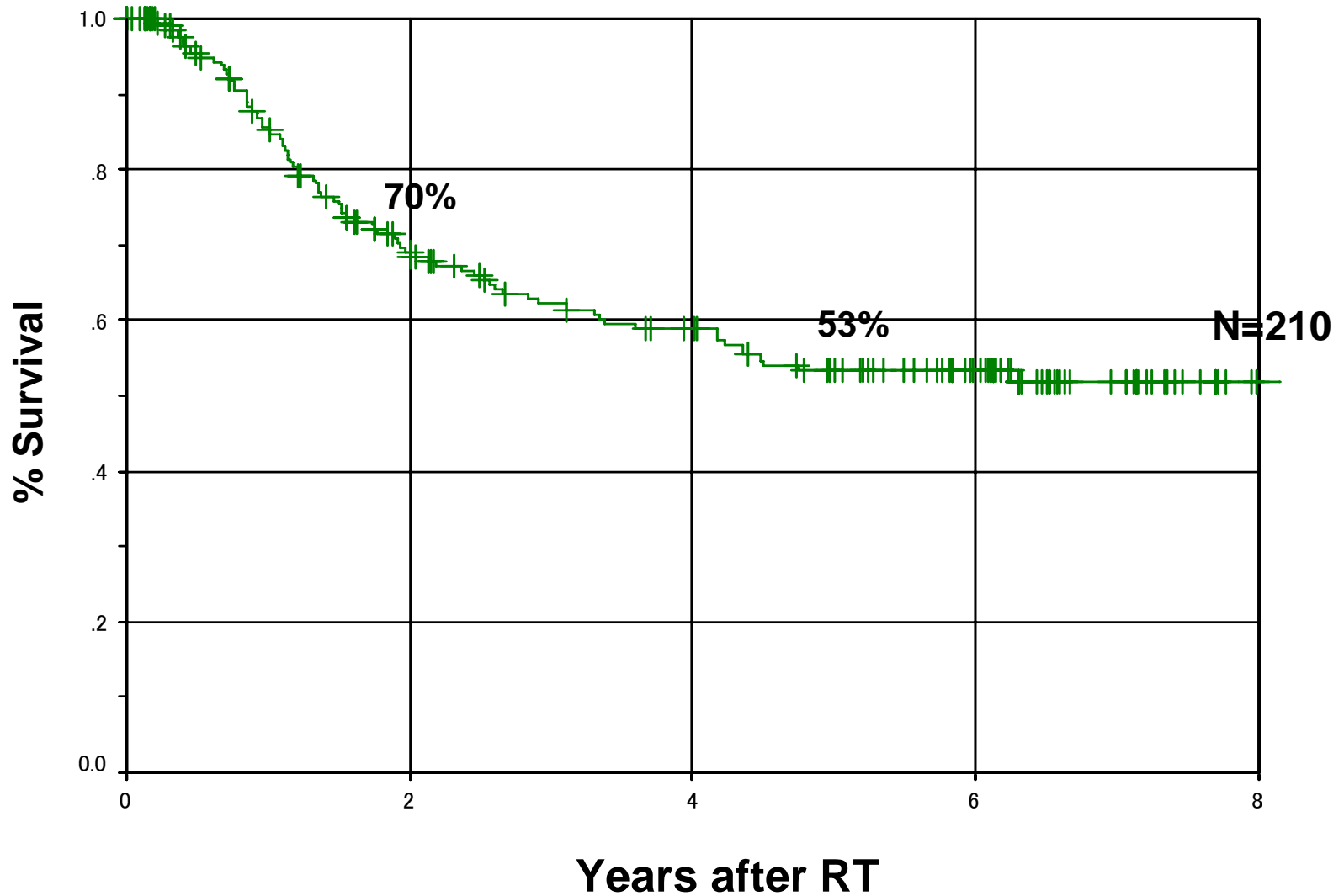
Late Radiation Morbidity

(at 5 years of follow-up)

RTOG/EORTC Grade	0	1	2	3	4
Rectum/Sigmoid colon (%)	74	18	5	3 (3%)	0
Urinary Bladder (%)	78	13	5	2 (4%)	2
Small Intestine (%)	94	4	1	1 (1%)	0

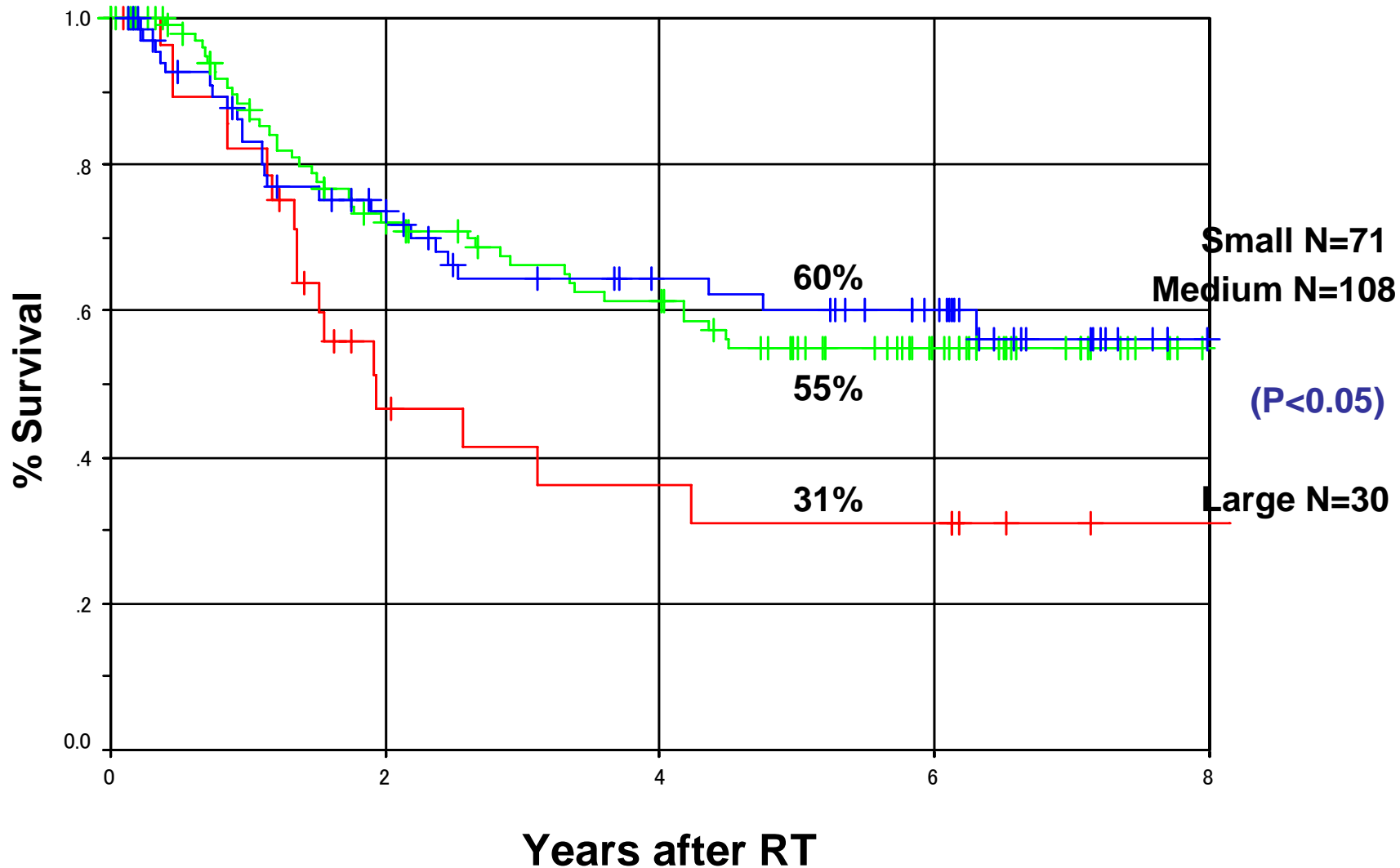
Overall survival rates for all cases

as of Dec. 2003



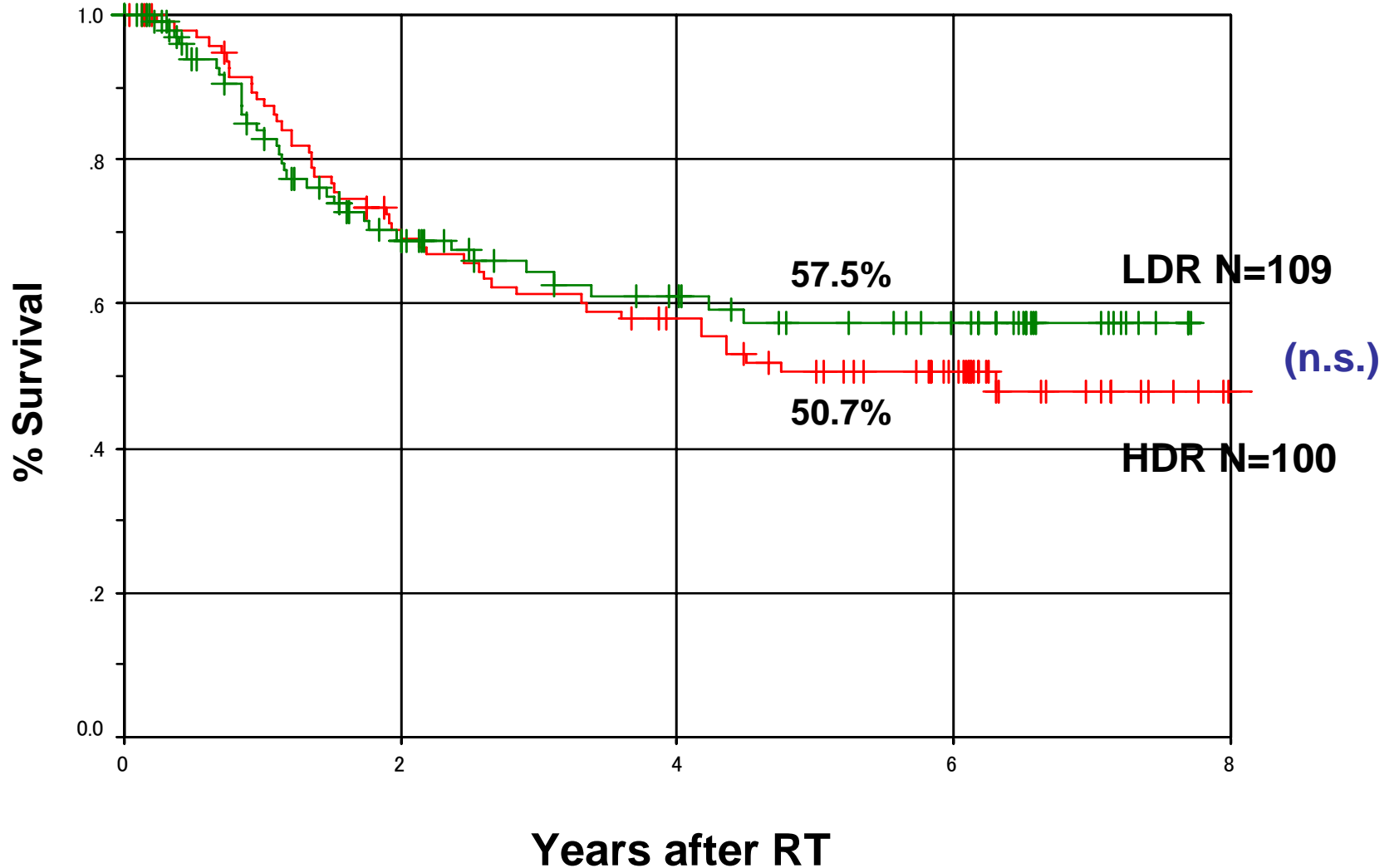
Overall survival rates by tumor size

as of Dec. 2003



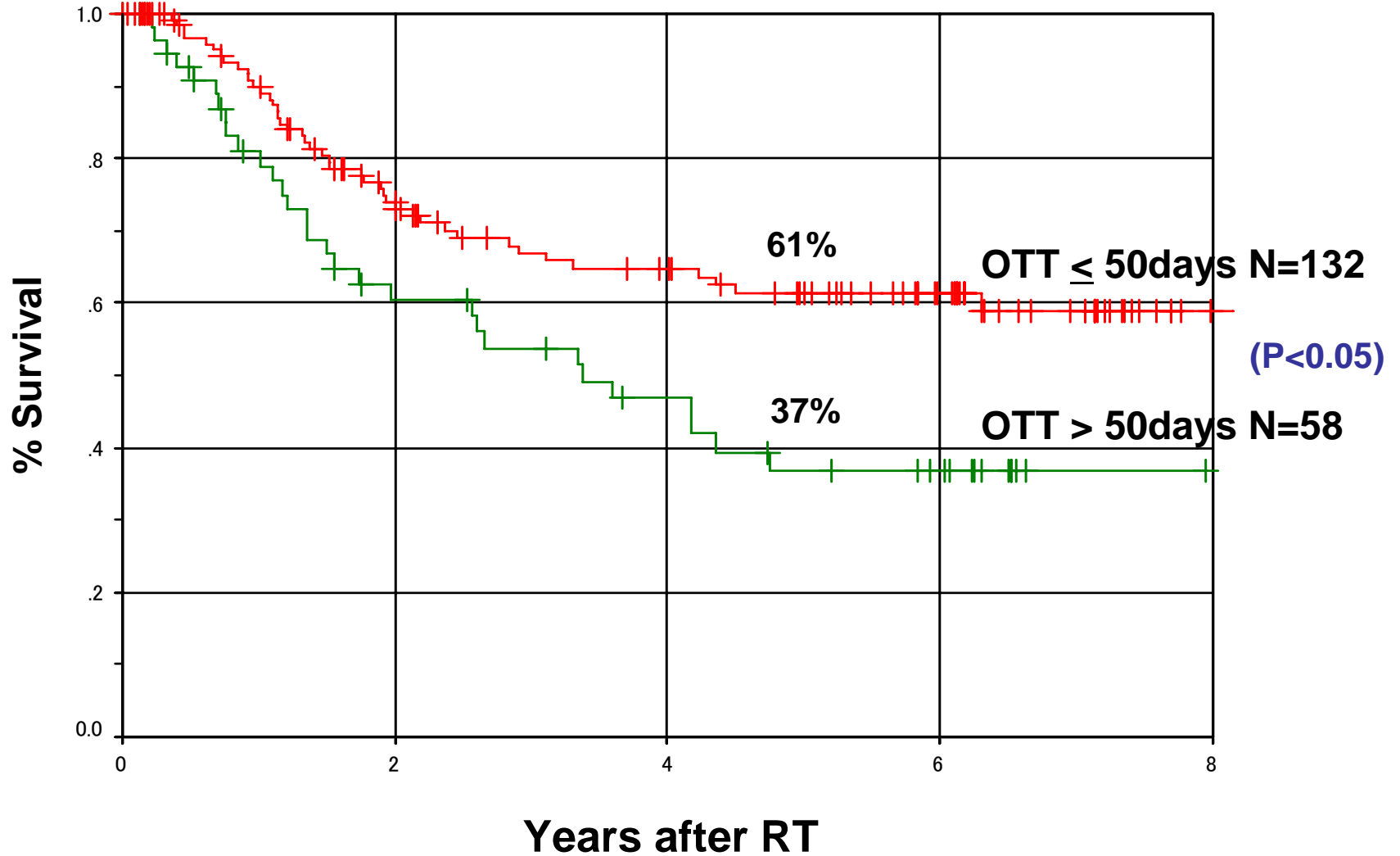
Overall survival rates by HDR/LDR-ICBT

as of Dec. 2003



Overall survival rates by OTT

as of Dec. 2003

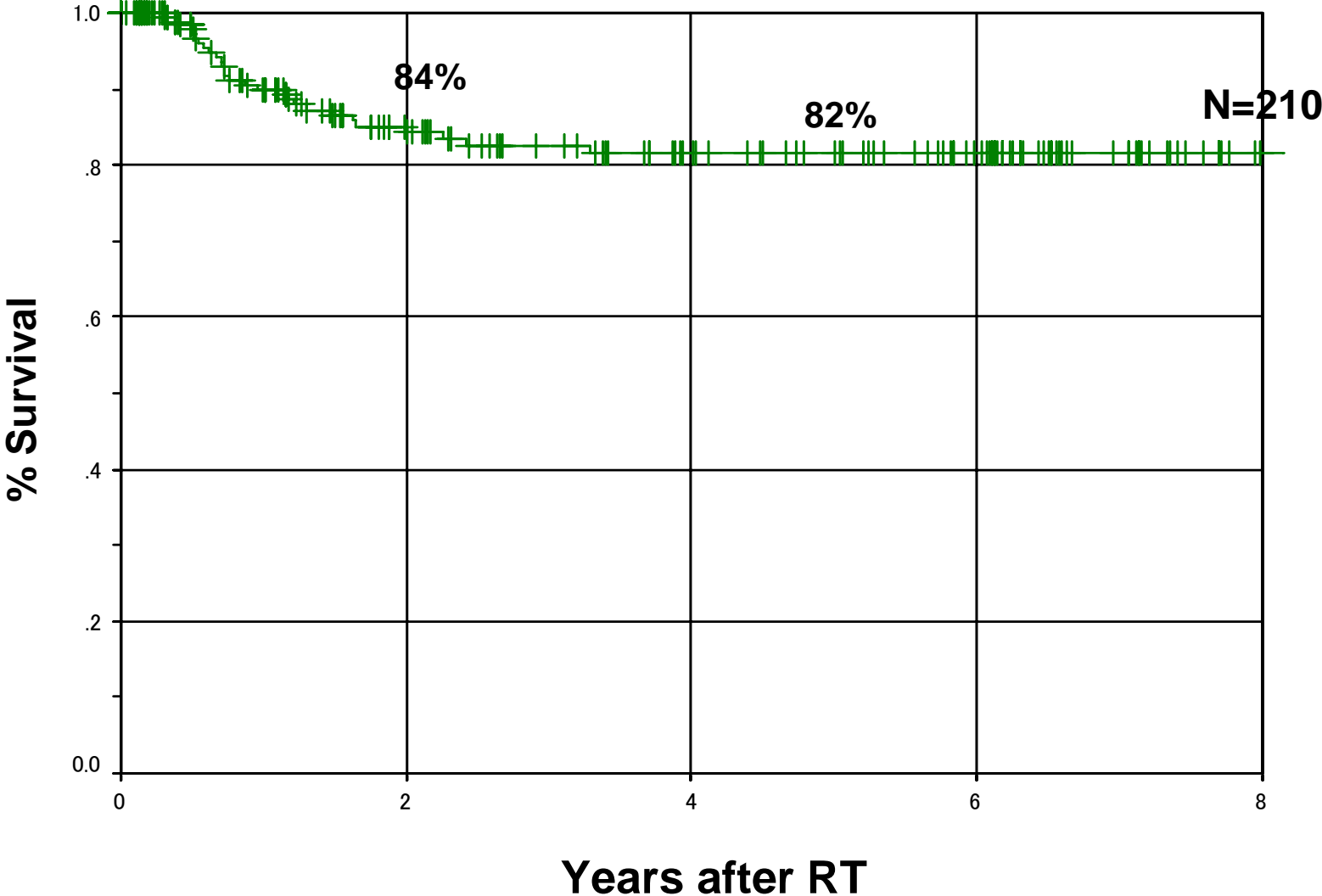


Overall survival rates by country

Country	2-y (%)	5-y (%)	follow-up (%)
CHN	82	50	88
IND	42	-	29
JPN	70	52	100
KOR	75	55	100
MYS	63	42	42
PHL	64	59	96
THA	66	63	73
VTN	72	60	36
Total	69	53	73

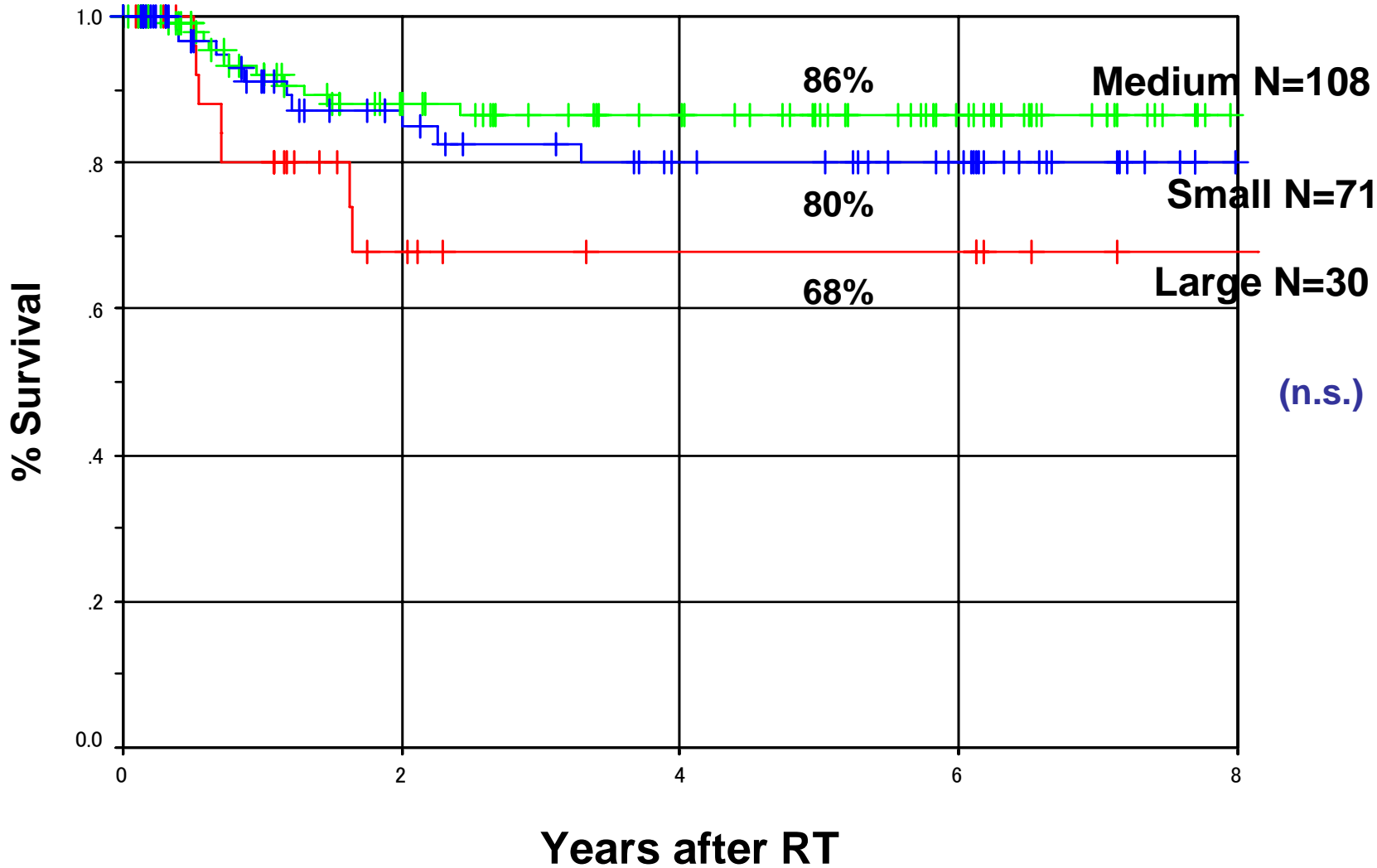
Local control rates for all cases

as of Dec. 2003



Local control rates by tumor size

as of Dec. 2003



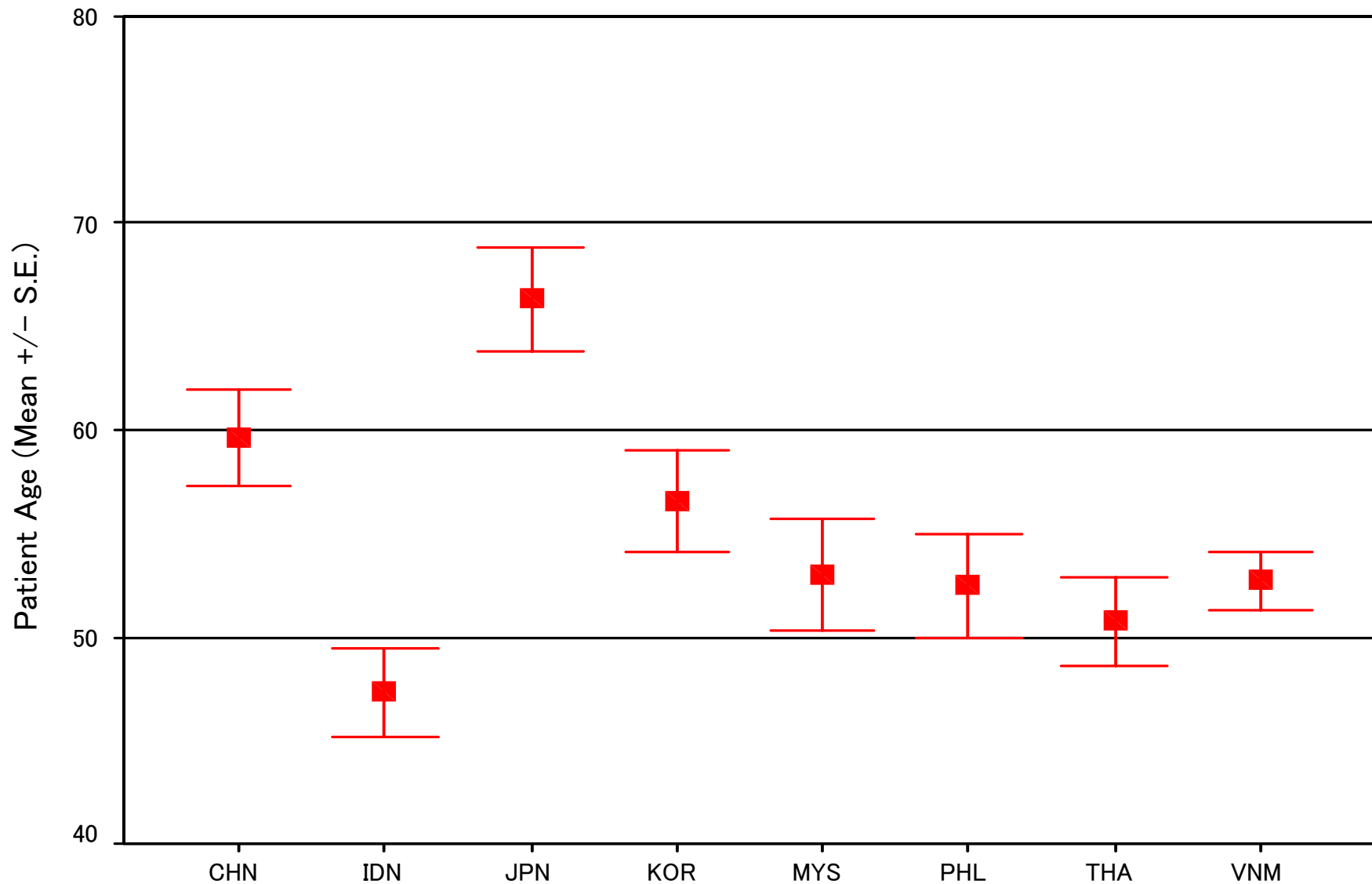
Summary of the study “Cervix-I”

1. The treatment of the standardized protocol was feasible in the FNCA countries.
2. The outcome of the treatment was favorable.
 - acute & late radiation morbidity : acceptable
 - 5-year OS: 53%
3. There was a significant difference in OS between patients with large tumors and those with small or medium-sized tumors.
4. There was a significant difference in OS between patients treated within 7 weeks and those treated over 7 weeks.

Summary of the study “Cervix-I”

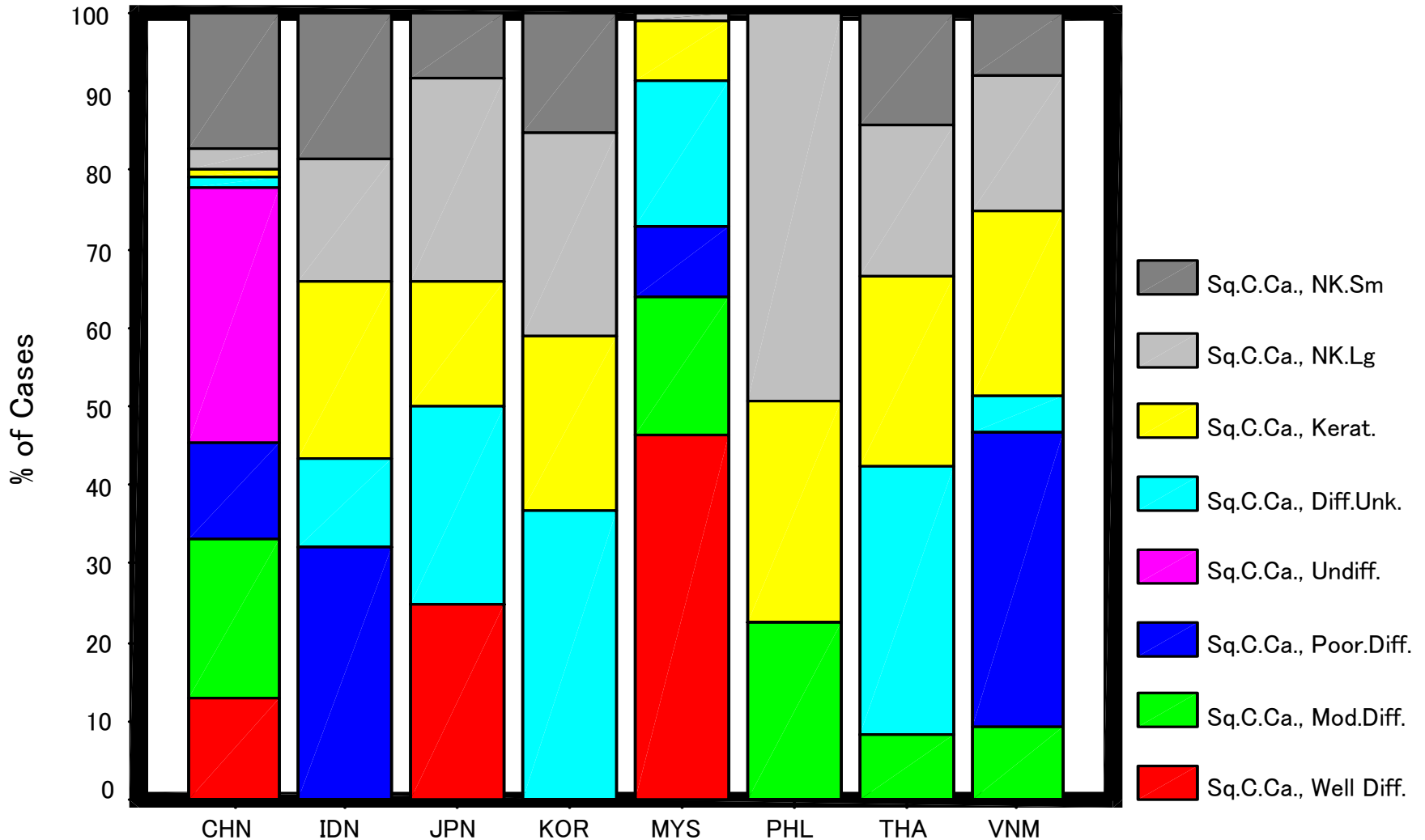
5. There were wide differences among countries in...
 - patient characteristics (age, tumor size, etc.)
 - treatment (rate of protocol deviation)
 - assessment of the efficacy and toxicity of the treatment
 - follow-up rate
 - survival rate
6. This study provided an important opportunity for cross-comparing the present status of RT in Asia.
7. The annual meeting provided the participants with a great deal of information on the current status of radiation oncology.
8. Based on the results, we are conducting some clinical trials, including AHF and ChemoRT for CC and ChemoRT for NPC.

Age distribution by country

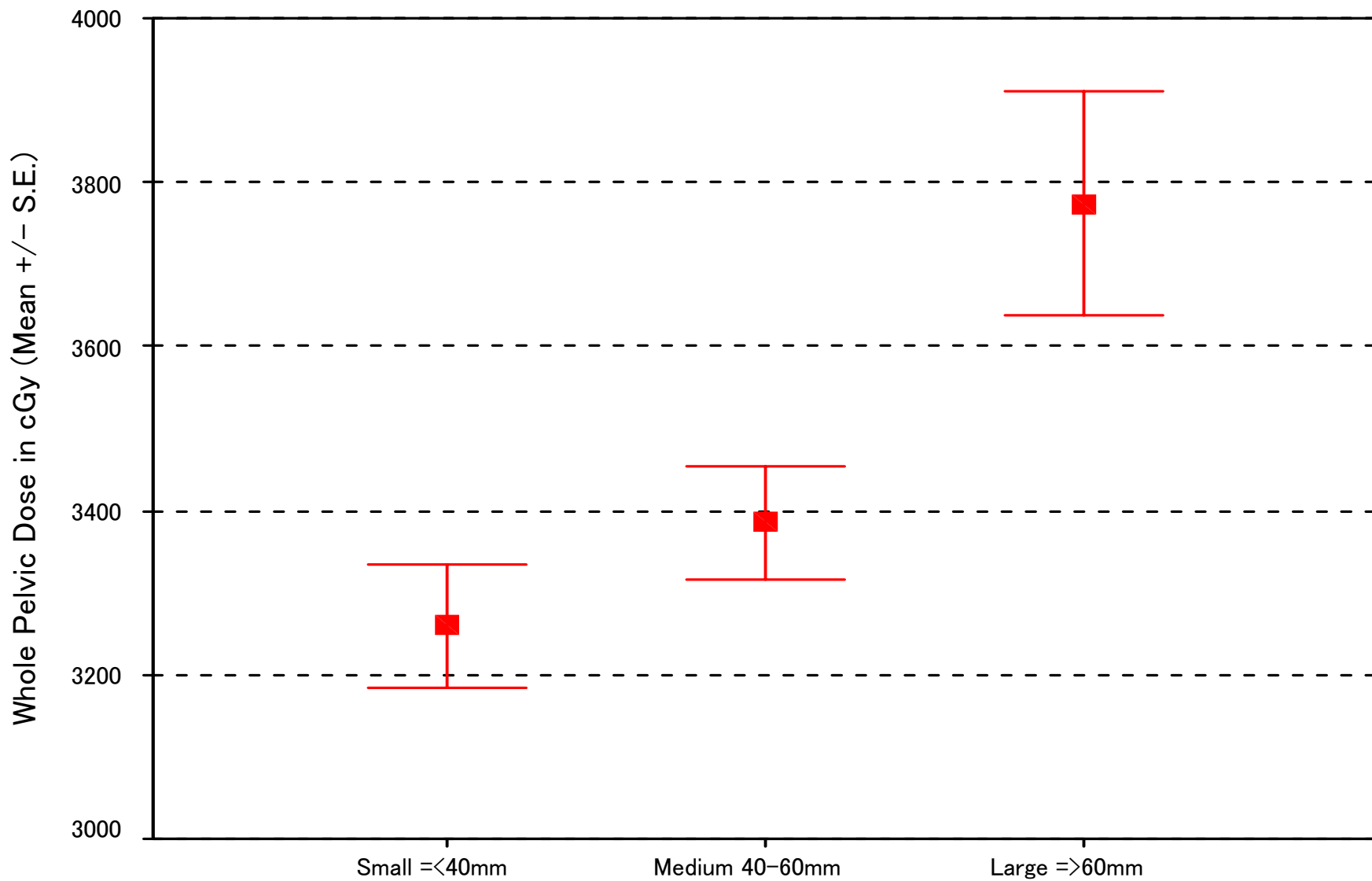


Histological subtype by country

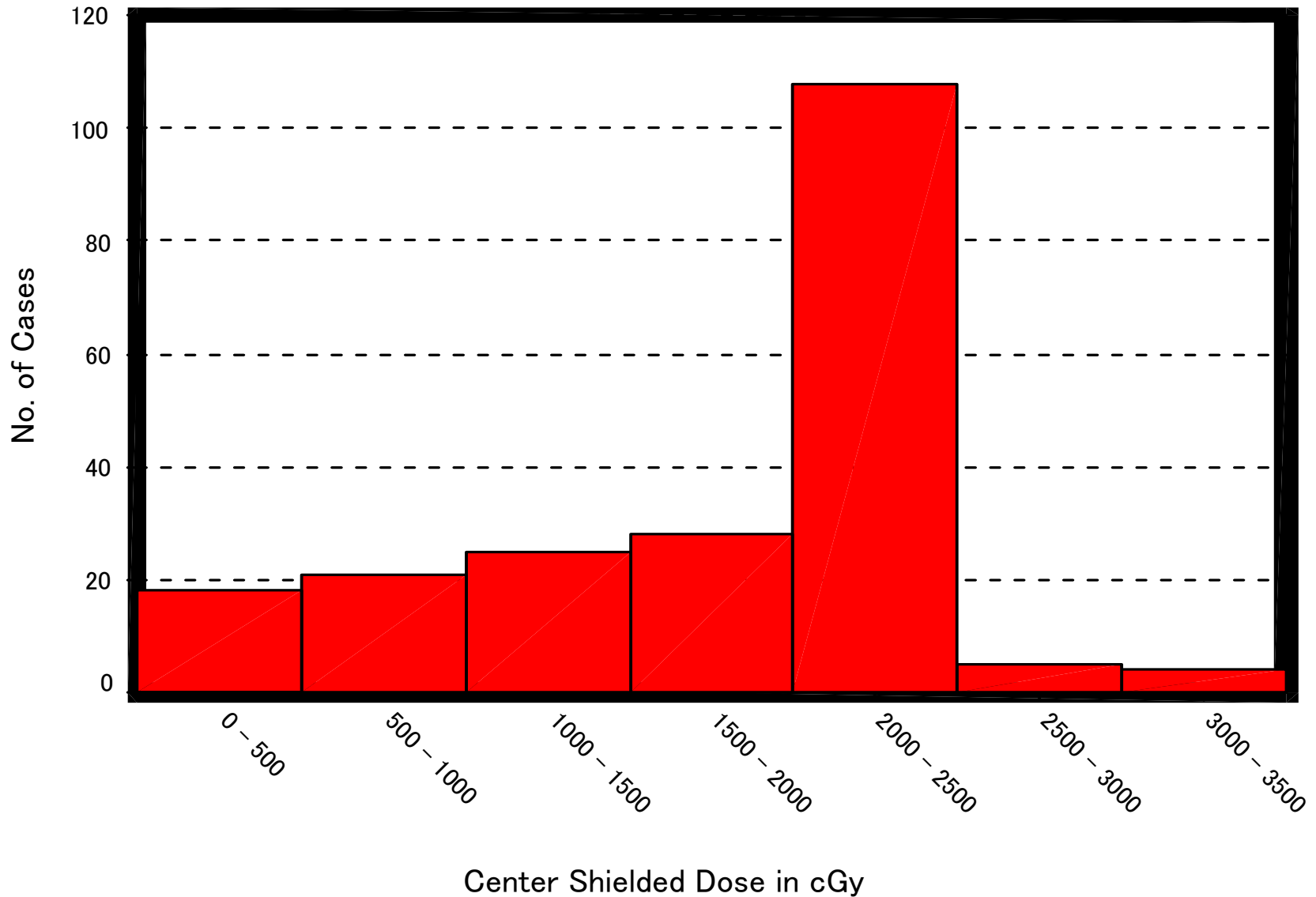
WHO Histology



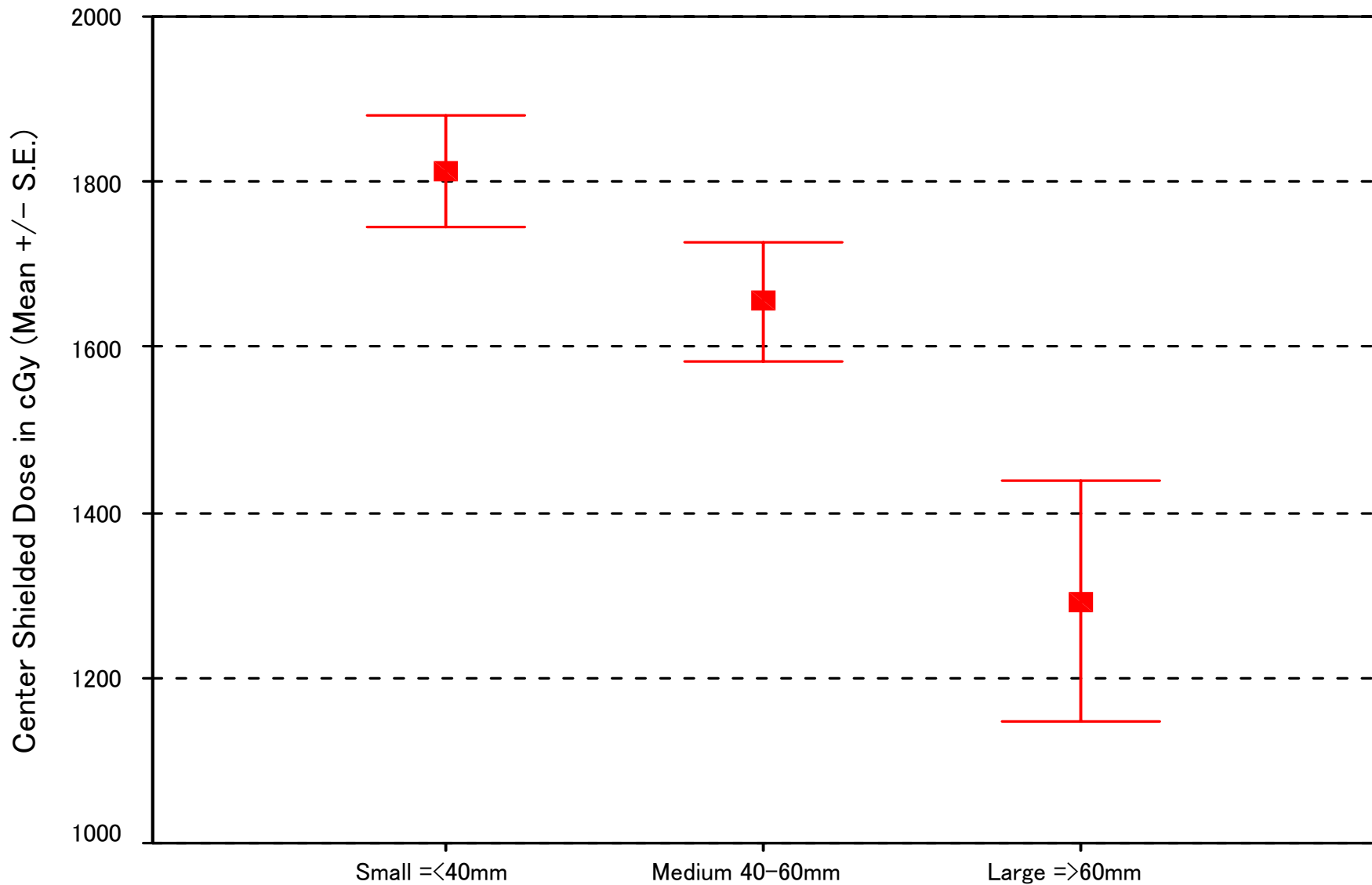
Dose of WP-EBRT according to tumor size



Dose of CS-EBRT



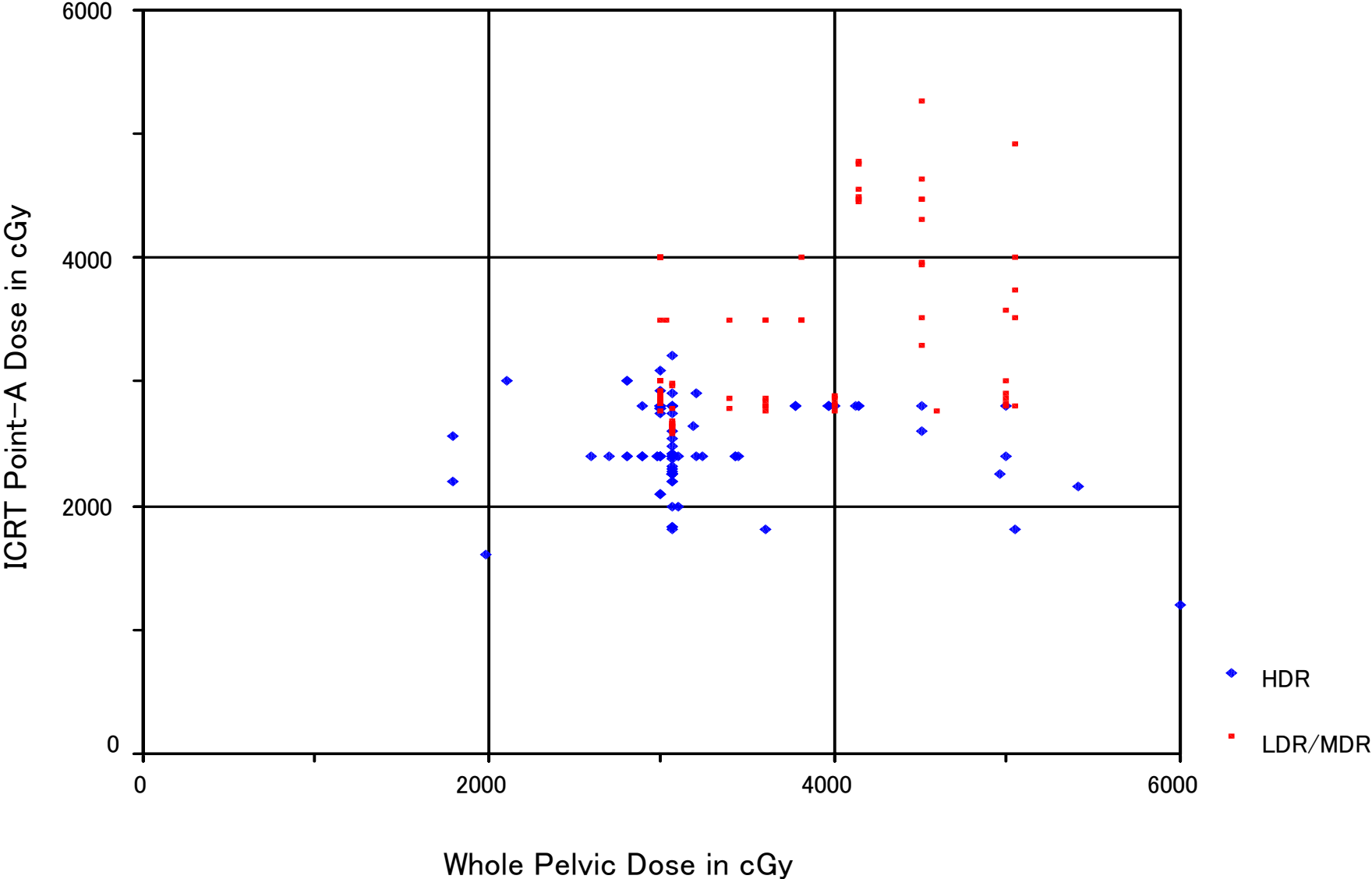
Dose of CS-EBRT according to tumor size



Summary of 210 Registered Cases

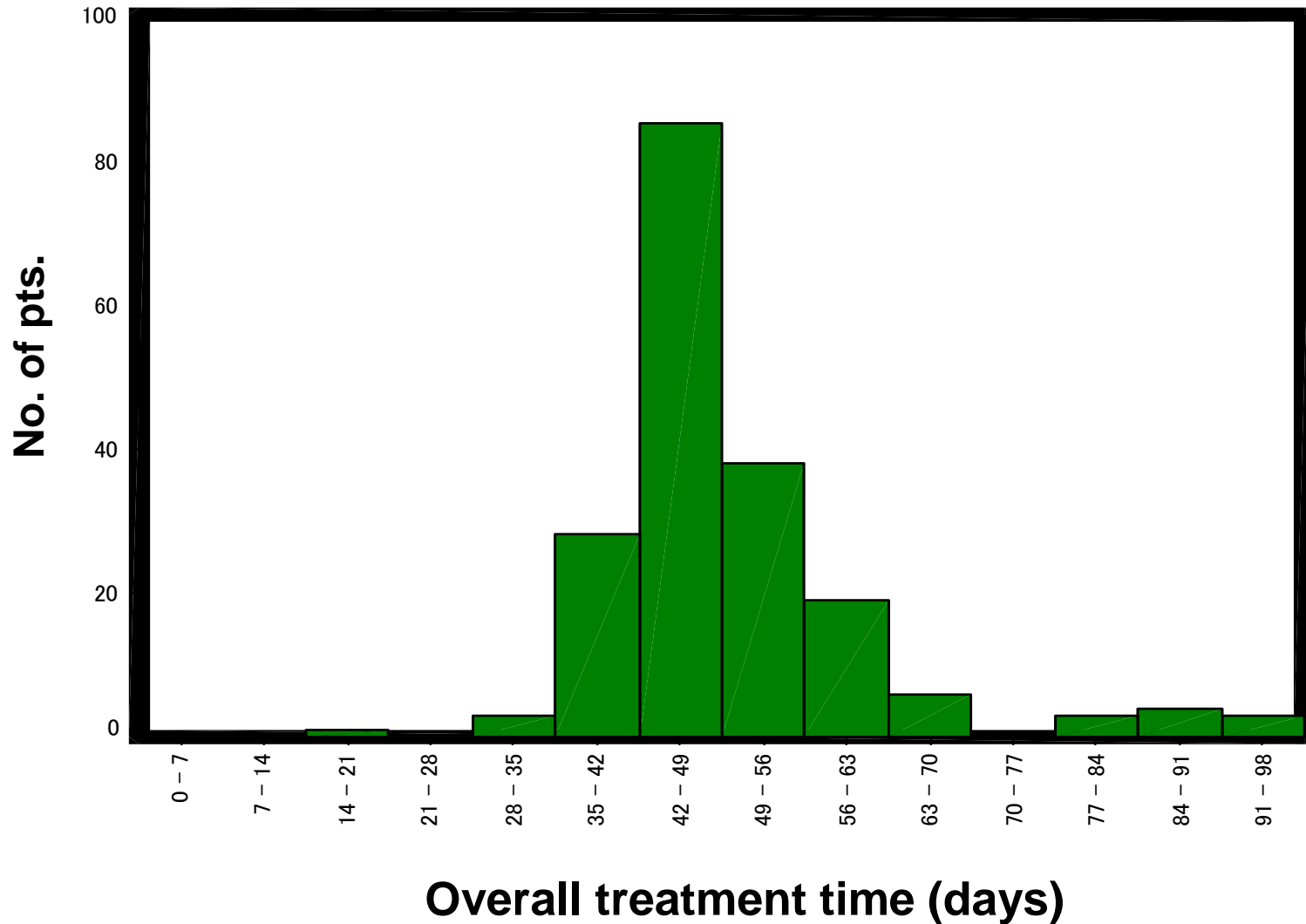
	HDR	LDR/MDR
No. of patients	100	109
Age	58.8 (31-86)	52.5 (27-79)
Tumor size		
small	37%	31%
medium	52%	52%
large	11%	17%
External RT		
WP	33 (18-60) Gy	36 (30-50) Gy
CS		17 (0-35) Gy
Brachytherapy (point A)	25 (12-32) Gy	32.5 (26-53) Gy

Correlation between the dose of WP-EBRT and the point A dose of ICBT



Overall treatment time

(N=210)



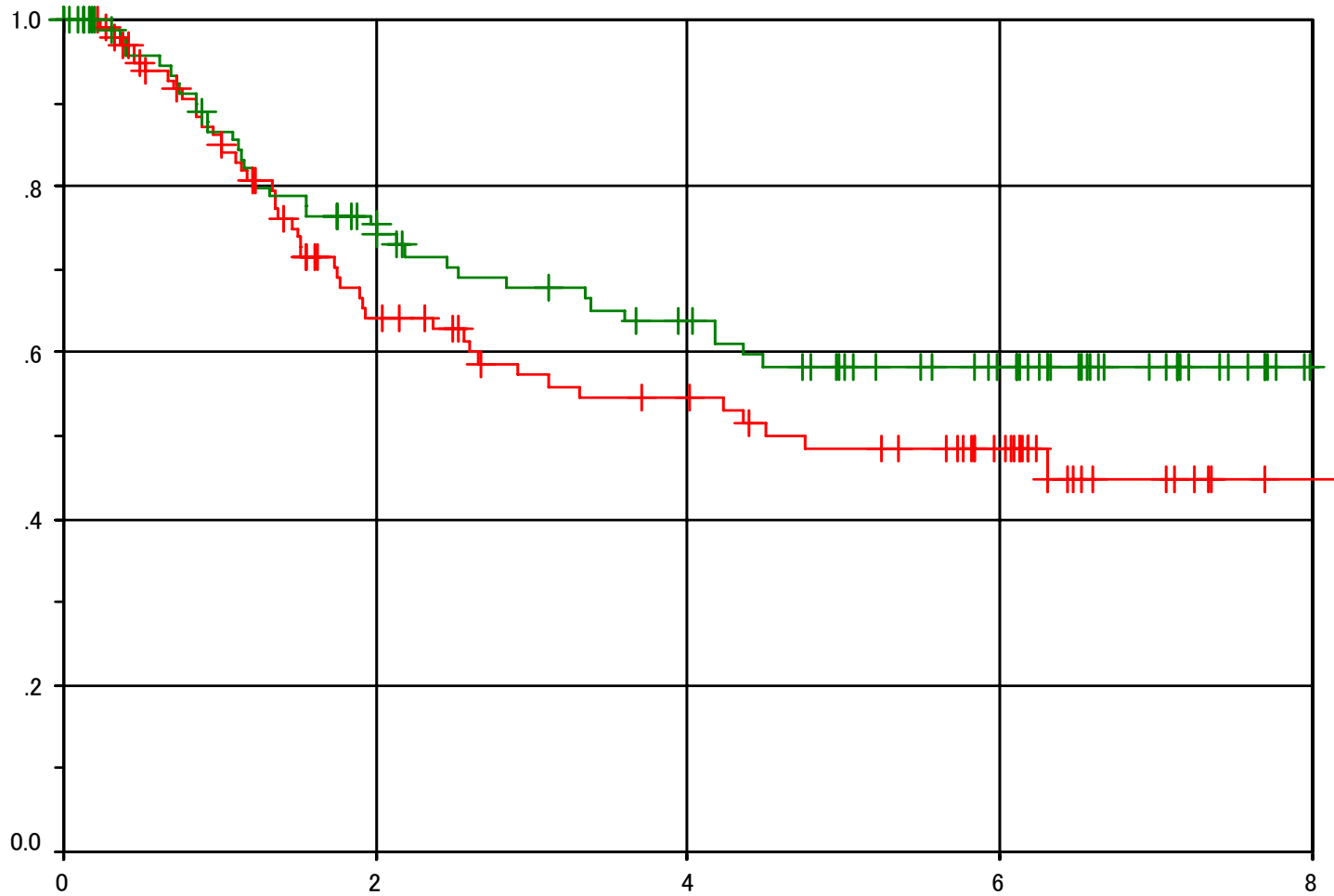
Follow-up status at 5 years

Country	No. of Pts	No. of Pts followed
CHN	34	30 (88%)
IDN	24	7 (29%)
JPN	33	33 (100%)
KOR	20	20 (100%)
MYS	12	5 (42%)
PHL	22	21 (96%)
THA	37	27 (73%)
VNM	28	10 (36%)
Total	210	153 (73%)

Local control rates by country

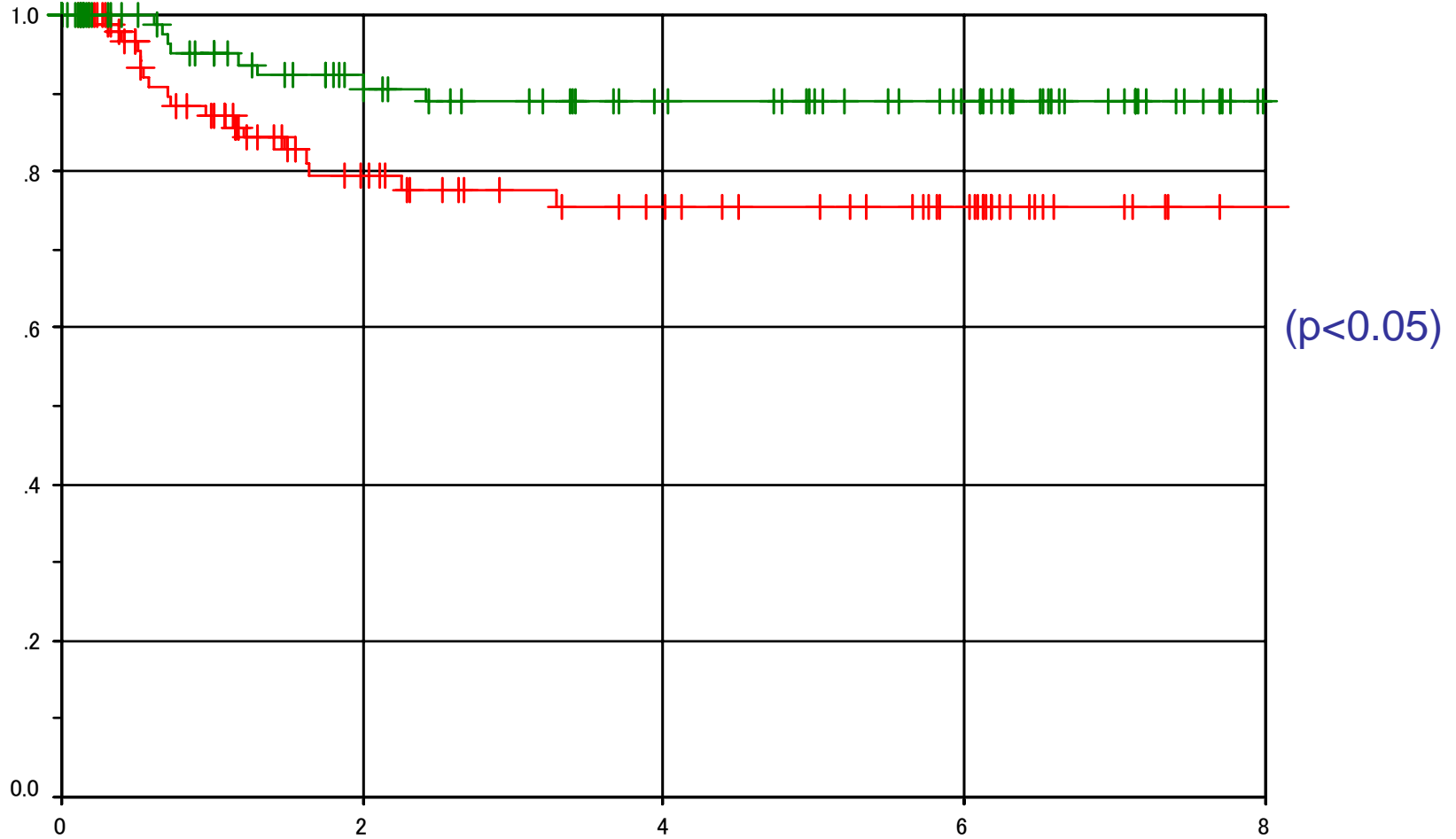
Country	2-y (%)	5-y (%)	follow-up (%)
CHN	89	84	88
IND	71	-	29
JPN	86	86	100
KOR	100	100	100
MYS	100	100	42
PHL	91	91	96
THA	66	66	73
VTN	83	75	36
Total	69	82	73

OS by degree of infiltration into PM

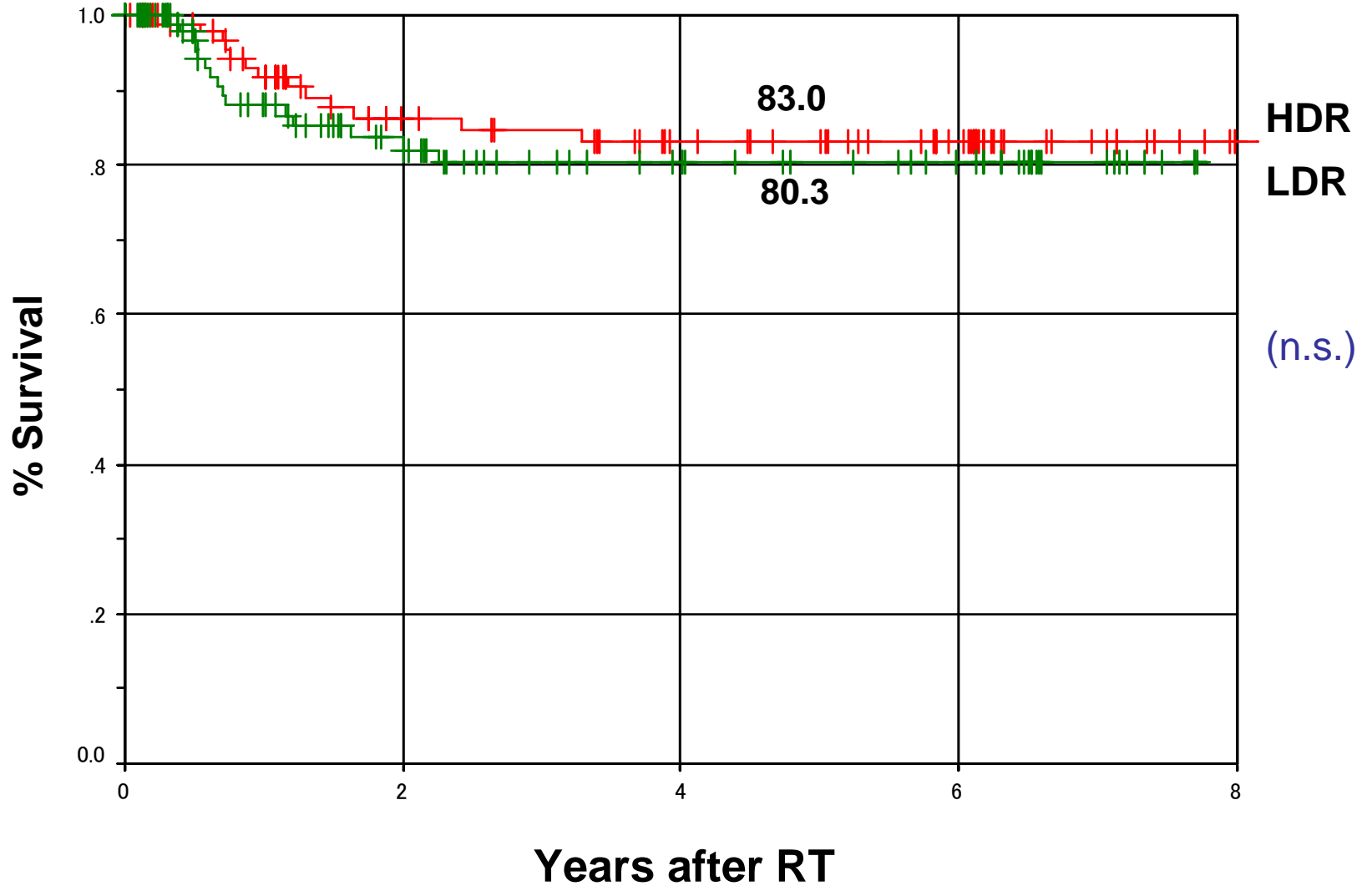


(n.s.)

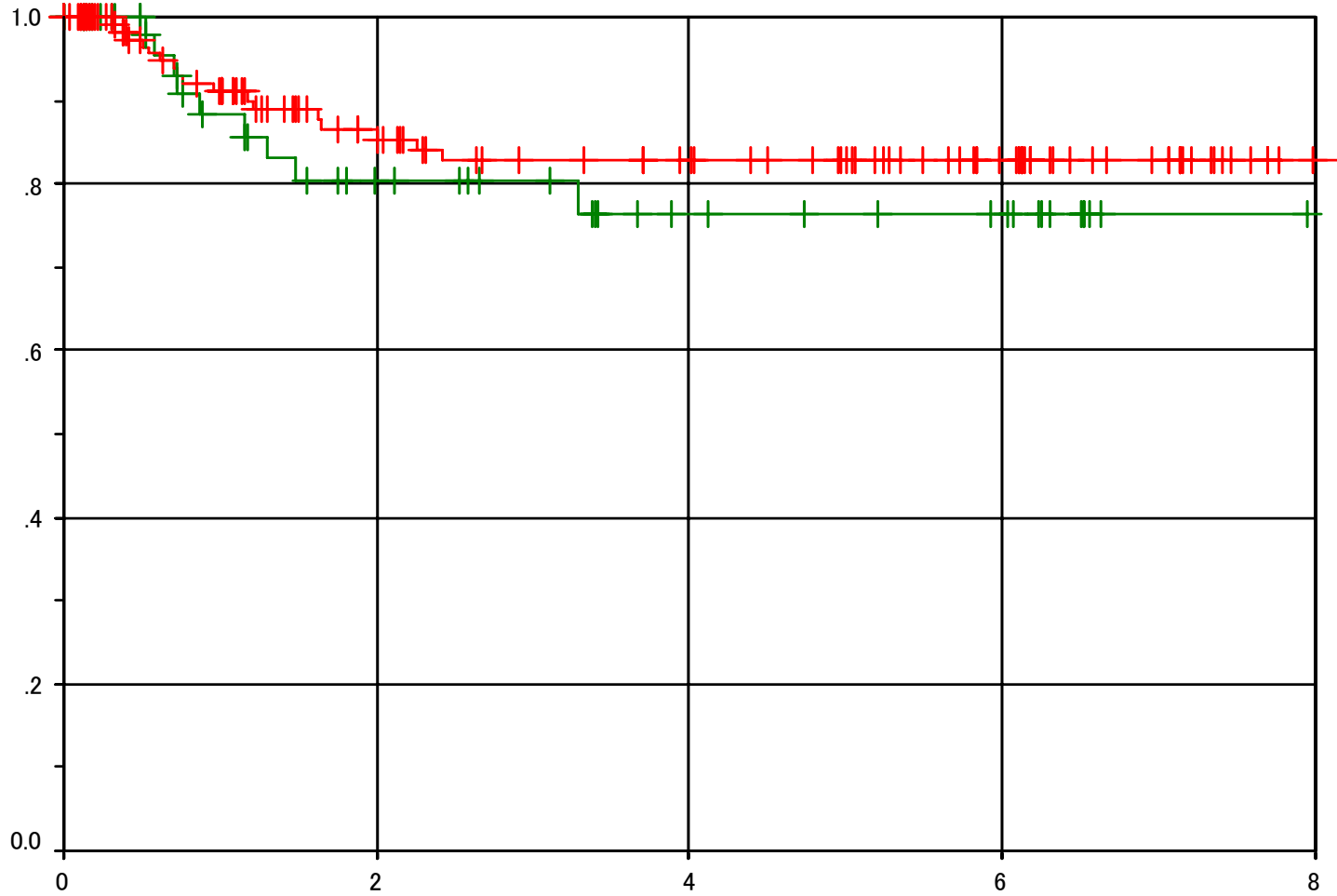
LC by degree of infiltration into PM



Local control rates by HDR/LDR-ICBT

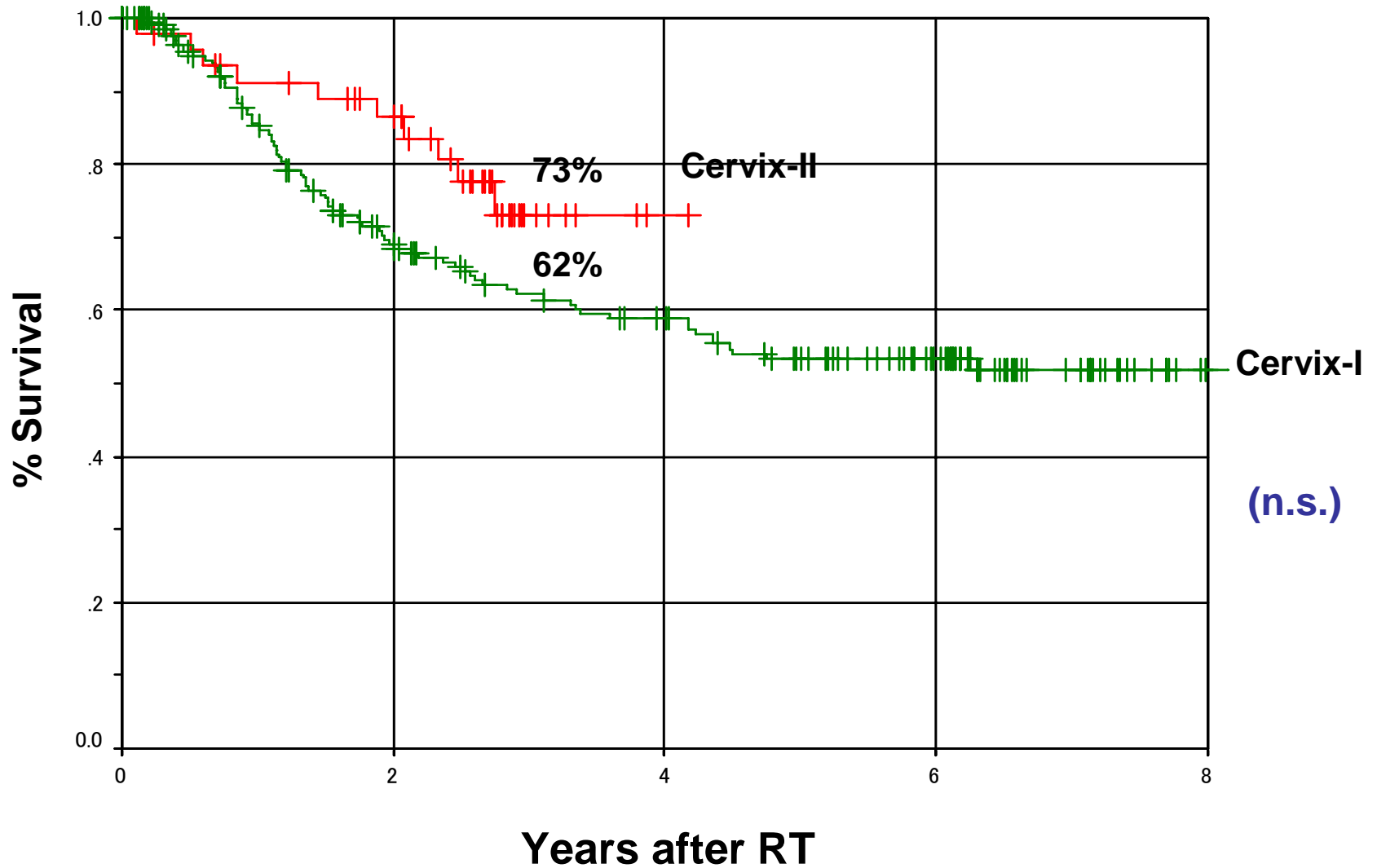


LC by OTT (50d)



(n.s.)

Overall survival rates by protocol (stage IIIB)



Local control rates by protocol (stage IIIB)

