

# Concurrent Chemoradiation in Cervical Cancer

Yaowalak Chansilpa, M.D.

Janjira Petsuksiri, M.D.

Faculty of Medicine, Siriraj Hospital,  
Thailand

# Concurrent Chemoradiation

- Phase I 30 mg/m<sup>2</sup> cisplatin
- Phase II 40 mg/m<sup>2</sup> cisplatin

# Radiation techniques

- External radiation

Linear accelerator 10 MV

Field : AP/PA

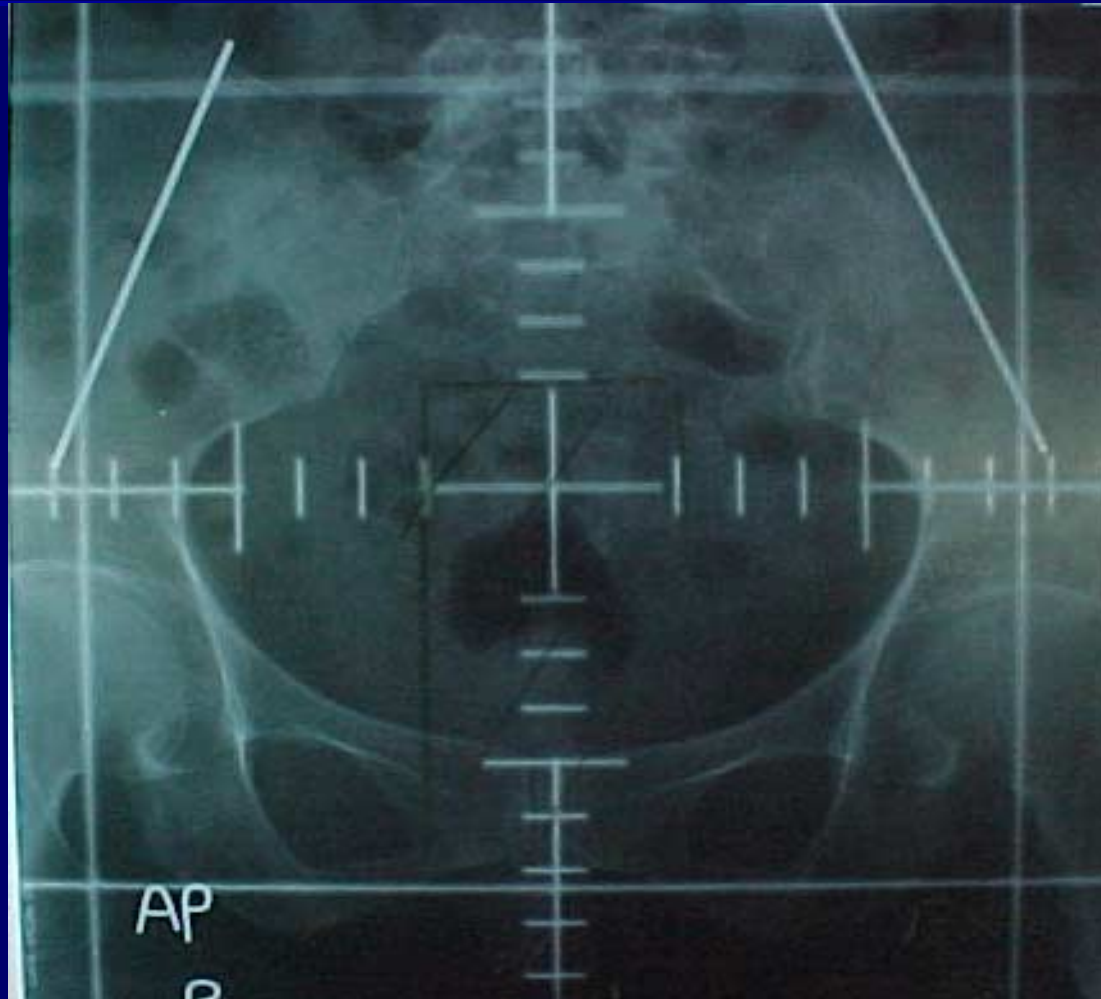
Dose : Whole pelvis 3000-3600 cGy

Central shield 1400-2000 cGy

Parametrial boost 1000 cGy in stage

III B

# Radiation techniques



# Radiation techniques

## ■ Brachytherapy

**MDR** : Cs 137

: Dose TDF 82 or 54 + 54

: External equivalent 5000 cGy

**HDR** : Ir 192

: Dose 650 cGy / F \* 4 F

# Cisplatin 30 mg/m<sup>2</sup>

- 5 cycles of weekly cisplatin
- 3 patients enrolled
- From March 2003 to April 2003

# Cisplatin 30 mg/m<sup>2</sup>

- Patients characteristics
- Compliance
- Toxicity
- Result of treatment

# Patients characteristics

- Age 27 - 61
- PS Gr 0-1
- No medical contraindication : CBC, renal function, hepatic function
- Pathological : squamous cell carcinoma
- Stage II- III ( FIGO staging)  
II B : 1 , III B : 2



# Compliance

- All patients receive 5 cycles of chemotherapy without interruption both chemotherapy and radiation therapy

# Toxicities

	No. 1	No. 2	No.3
WBC	0	2	2
Neutrophil	1	1	2
platelet	0	0	0
RBC	0	1	0

# Toxicities

	No. 1	No. 2	No.3
Bladder	1	1	1
Bowel	1	1	1
Renal	0	0	1
N / V	1	1	1
Skin	1	1	1

# Result of treatment

- At 3 month after complete treatment  
All 3 patients : Complete response
- Not reach 6 month follow up now

# Conclusion

- Concurrent chemoradiation with cisplatin 30 mg/m<sup>2</sup> weekly is tolerable.

# Cisplatin 40 mg/m<sup>2</sup>

- Patients characteristics
- Compliance
- Toxicity
- Result and follow up



# Compliance

- All patients received 5 cycles of chemotherapy without interruption of chemotherapy or radiation therapy



# Toxicities

	No.1 (S)	No.2(S)	No.3 (A)	No.4 (A)
RBC	0	0	1	0
WBC	0	0	1	0
Neutrophil	0	0	0	0
Platelet	0	0	0	0

# Toxicities

	No.1	No.2	No.3	No.4
Bladder	0	0	0	0
Bowel	1	0	0	1
Renal	0	0	0	0
N / V	1	0	1	2
Skin	1	1	1	1

# Result of treatment

- Not reach 6 months after treatment

# Conclusion

- Concurrent chemoradiation with weekly cisplatin is tolerable.
- Both 30 and 40 mg/m<sup>2</sup>

**Remind for last year (2002)**

## Concurrent with Cisplatin 40 mg/ m<sup>2</sup>

- 7 patients
- Locally advanced stage II- III

Toxicity	Gr 0-1	Gr 2	Gr 3	Gr4
<b>Hematologic</b>				
-anemia	7/7	0	0	0
-neutropenia	3/7	2/7	2/7	0
-thrombo cytopenia	7/7	0	0	0
<b>GI</b>				
- N/V	3/7	4/7	0	0
-diarrhea	4/7	1/7	2/7	0
<b>Renal</b>	5/7	1/7	0/7	1/7

# Comparison for cisplatin 40 mg/ m2

	2002	2003
compliance	7/7	4/4
Toxicities ( gr)		
- hemato	neutropenia gr 3 (2/7)	gr 0-1
- renal	gr 4 ( 1/7 )	gr 0
- others	Diarrhea gr 3 (2/7)	gr 0-2



**Thank you**